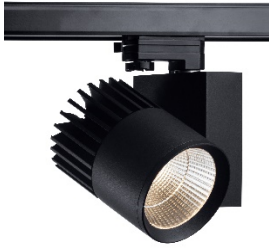


Product Datasheet

MADON

Ray Spot Luminaire



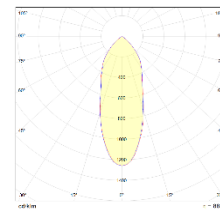
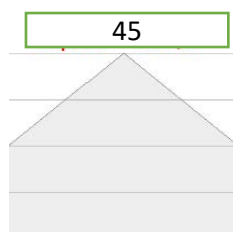
Description:

Suitable for surface mounting on ceilings. The luminaire must not be covered with insulation. For further details please contact with us. Light sources are fitted in the luminaire. The luminaire offer energy performance and much longer lifetime. The Luminaire will be accurate and realistic solution for you.

Technical Features:

Installation	: Surface	Kelvin	: 3000-4000-6000
Warranty	: 3 years	CRI	: >90
Lamp Type	: COB LED	LED Lifetime	: 80.000 h
Housing	: Aluminium	Power Supply	: 110-240V 50-60Hz
Glass	: Reflector	Op. Temp.	: -20°C / +45 °C
IP	: 20		

Prometrical Data:



Technical Details:

Item	Power (W)	Description	Light Output (Lm)	Dimensions (mm)
MRG1	12	Madon Ray Spot Gear 1	2140	170-Q125
MRG2	28	Madon Ray Spot Gear 2	3230	170-Q125

Technical Options:

- *Dali
- *Dimmer
- *Emergency Kits

Colours



Quality Certificate:



Tel : +90 (212) 798 3041 - 42
 Fax : +90 (212) 798 3043
 Web : www.edealight.com

EDEA LIGHT reserves the right to change the technical specifications of their products. These changes will allow the continual improvement of the products and will also ensure the conformity to current legal changes.